



DEVELOPMENTS IN SENSORISED SMART RFID TAGS: MONITORING AND TRACEABILITY OF SENSITIVE PRODUCTS

MIGUEL DE LA FUENTE
ANDRÉS GARCÍA
JESÚS ABRIL
ANTONIO ABARCA
→ JAVIER G^a ESCRIBANO



- **Motivation**
- **State of the art**
- **Systems features**
- **Operating Principle**
- **Sensor tag**
- **Base Station**
- **Applications**
- **Results and Conclusions.**

INDEX

- **Motivation**
- State of the art
- Systems features
- Operating principle
- Sensor tag
- Base Station
- Applications
- Results and Conclusions

- **Public concern about the traceability of products**
- **Tracking and monitoring a big variety of products**
- **European directives for special products**
- **Low cost and reliability.**

INDEX

- Motivation
- **State of the art**
- Systems features
- Operating principle
- Sensor tag
- Base Station
- Applications
- Results and Conclusions

➤ ZigBee standards



➤ Wireless LAN

➤ LF and HF combined

➤ New features:

- @ use of 2.45 GHz and RFID technology
- @ long operating life.

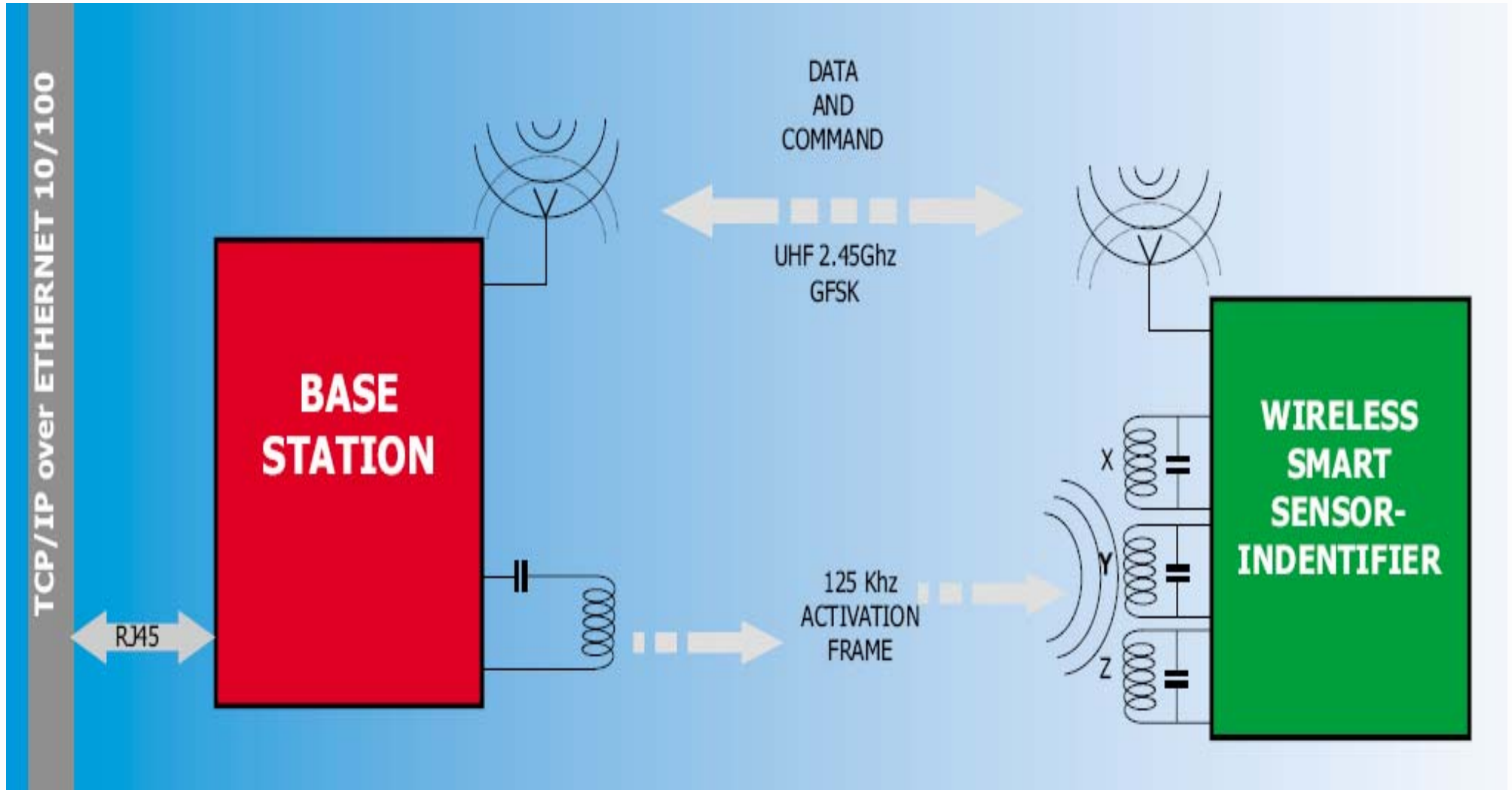


INDEX

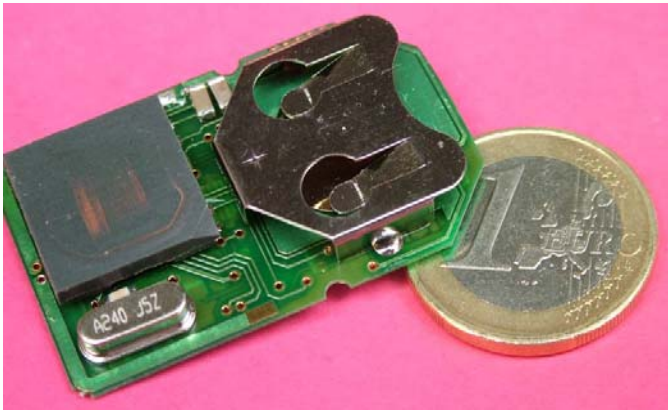
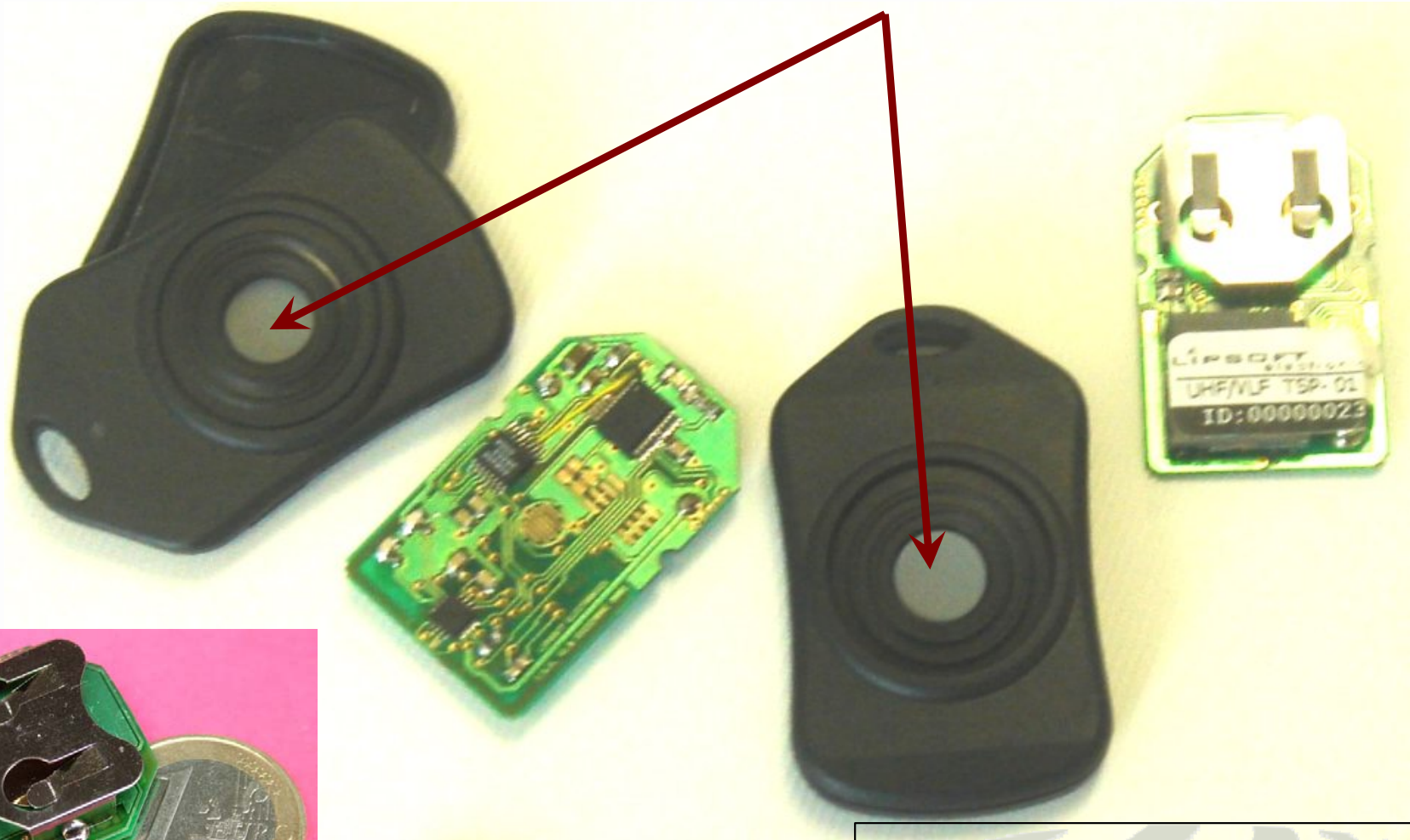
- Motivation
- State of the art
- **Systems features**
- Operating principle
- Sensor tag
- Base Station
- Applications
- Results and Conclusions

- **Data identification-registration.
RFID: LF (125kHz) vs HF (2.45 GHz)**
- **Low consumption mode normally active: 2μA**
- **Efficient memory management**
- **Ethernet 100/10: use EPC and remote control.**

Operating Principle



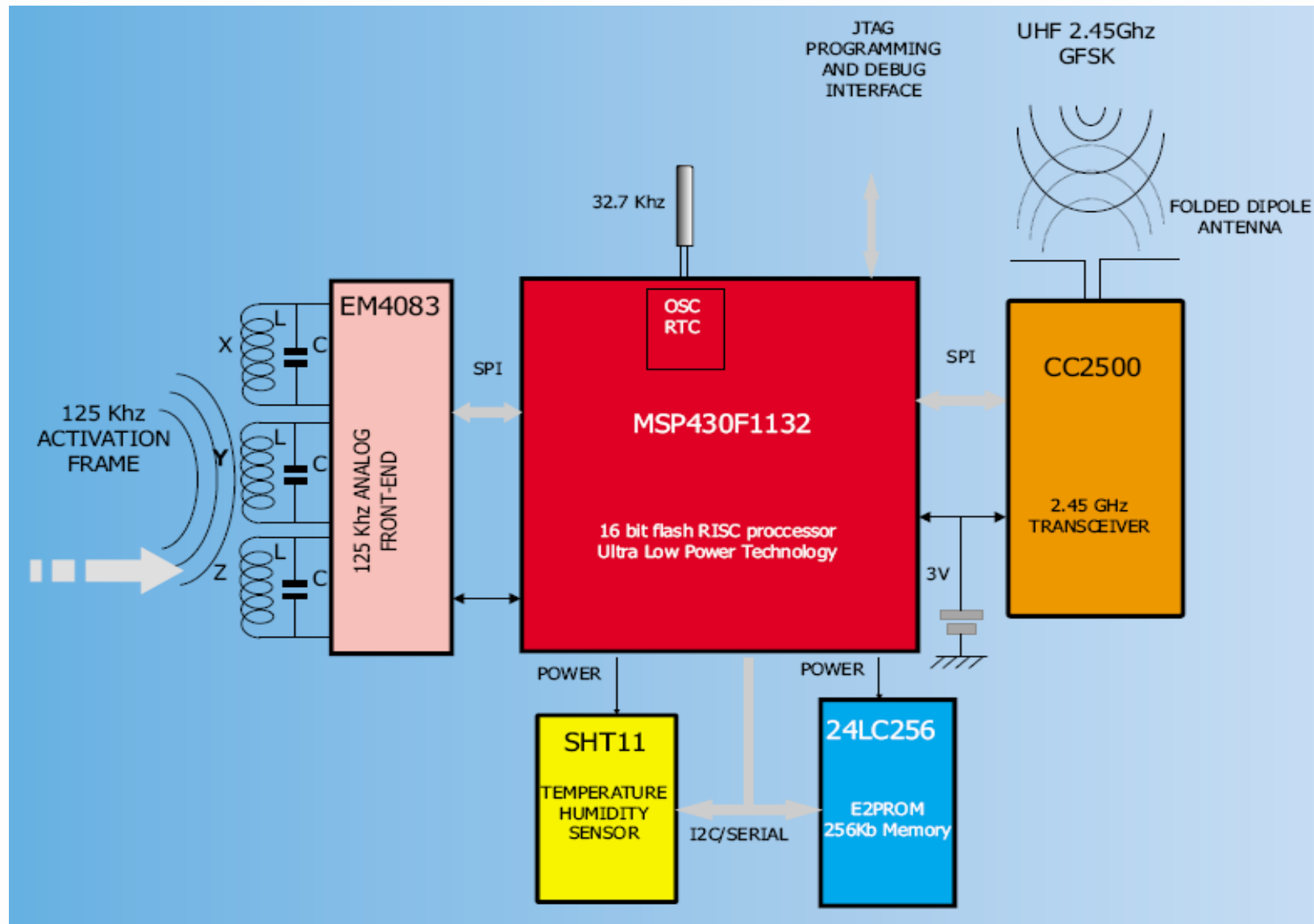
Sensor Tag



How does it work?

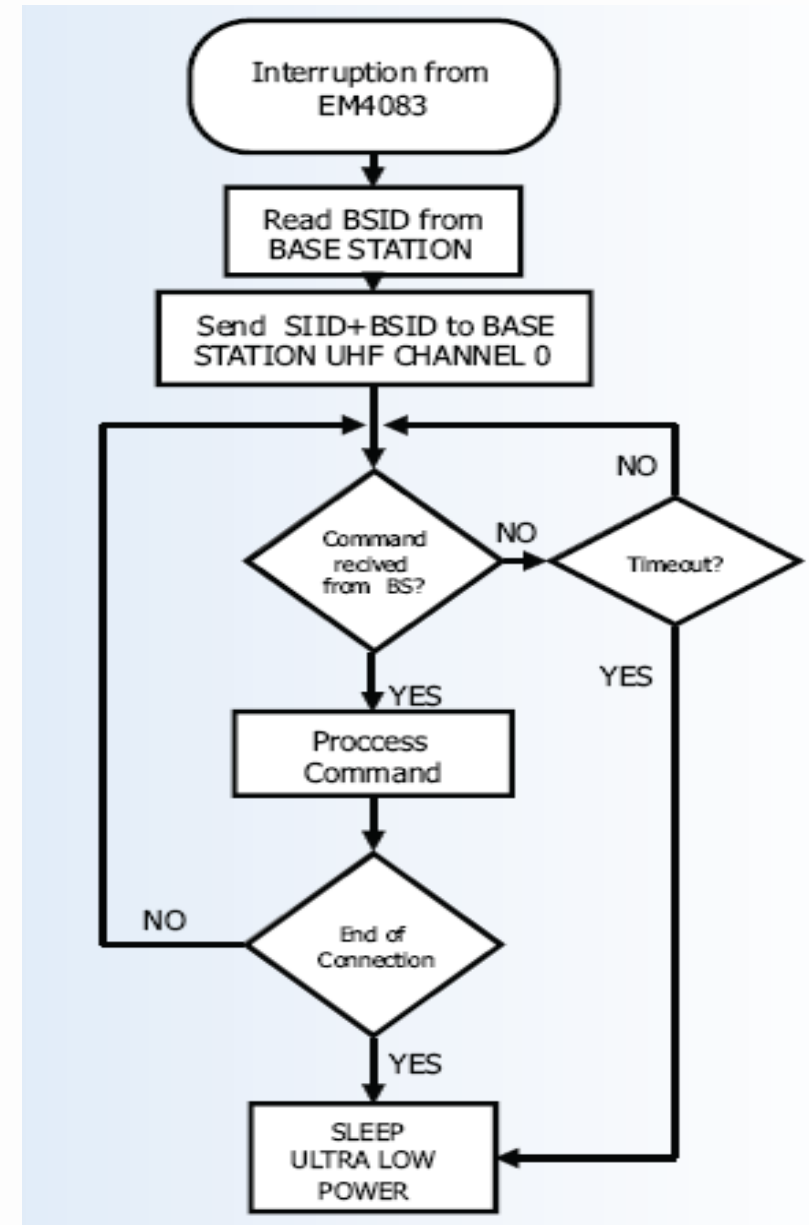
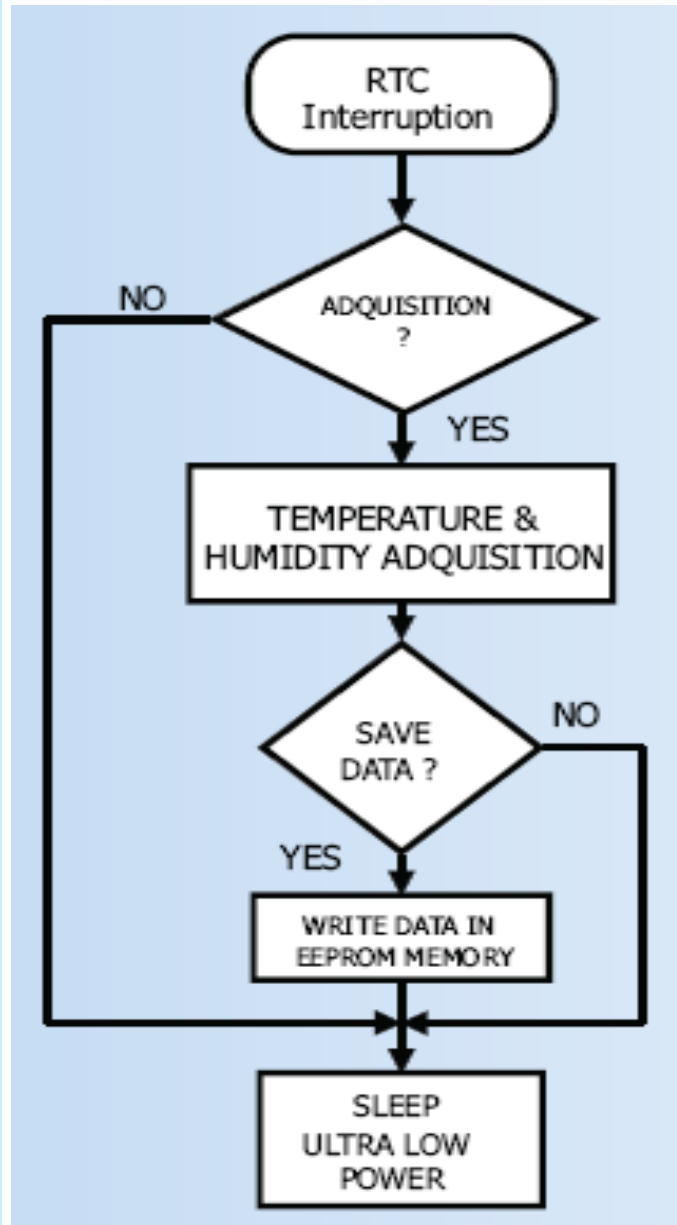


Sensor Tag

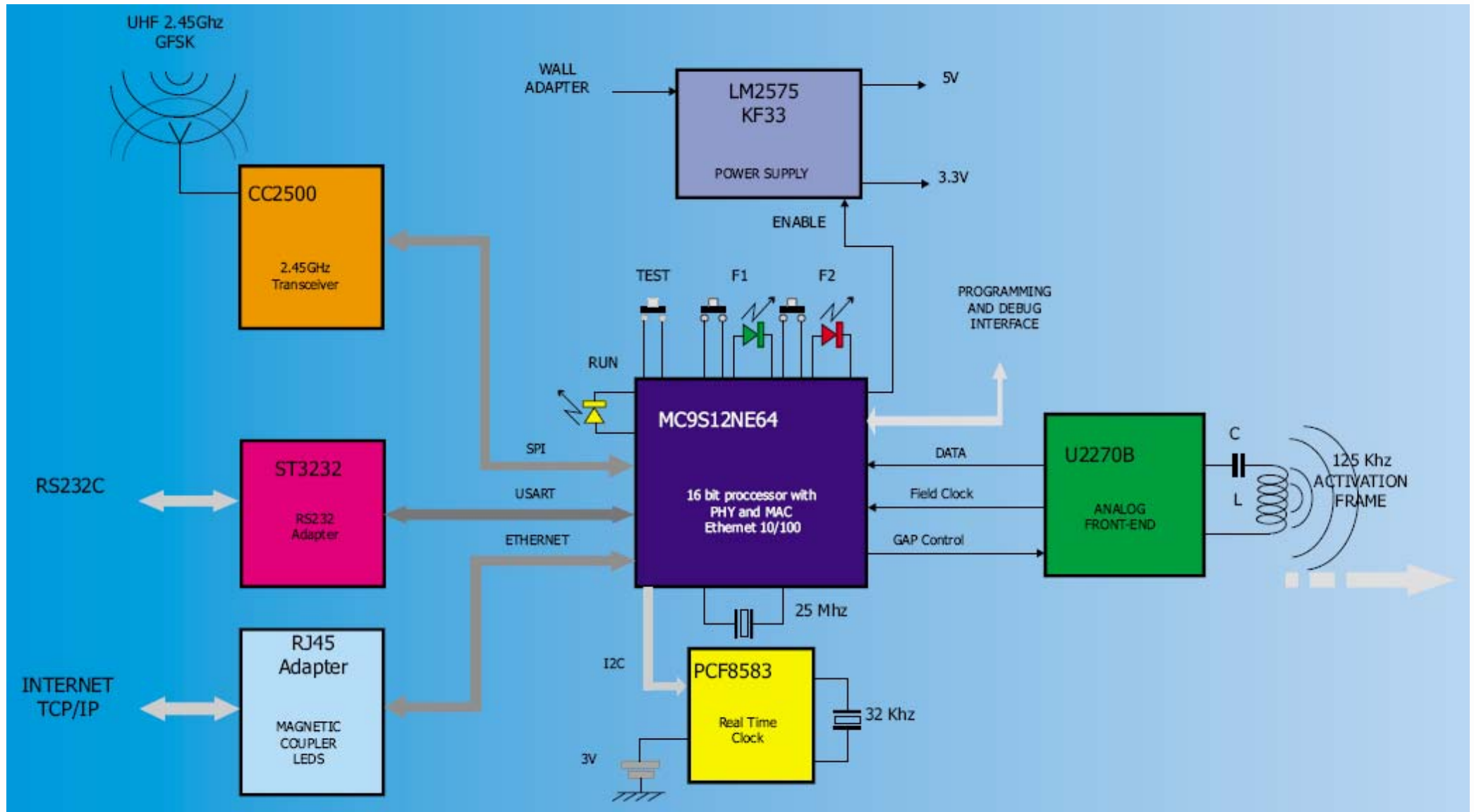


INDEX

- Motivation
- State of the art
- Systems features
- Operating principle
- **Sensor tag**
- Base Station
- Applications
- Results and Conclusions

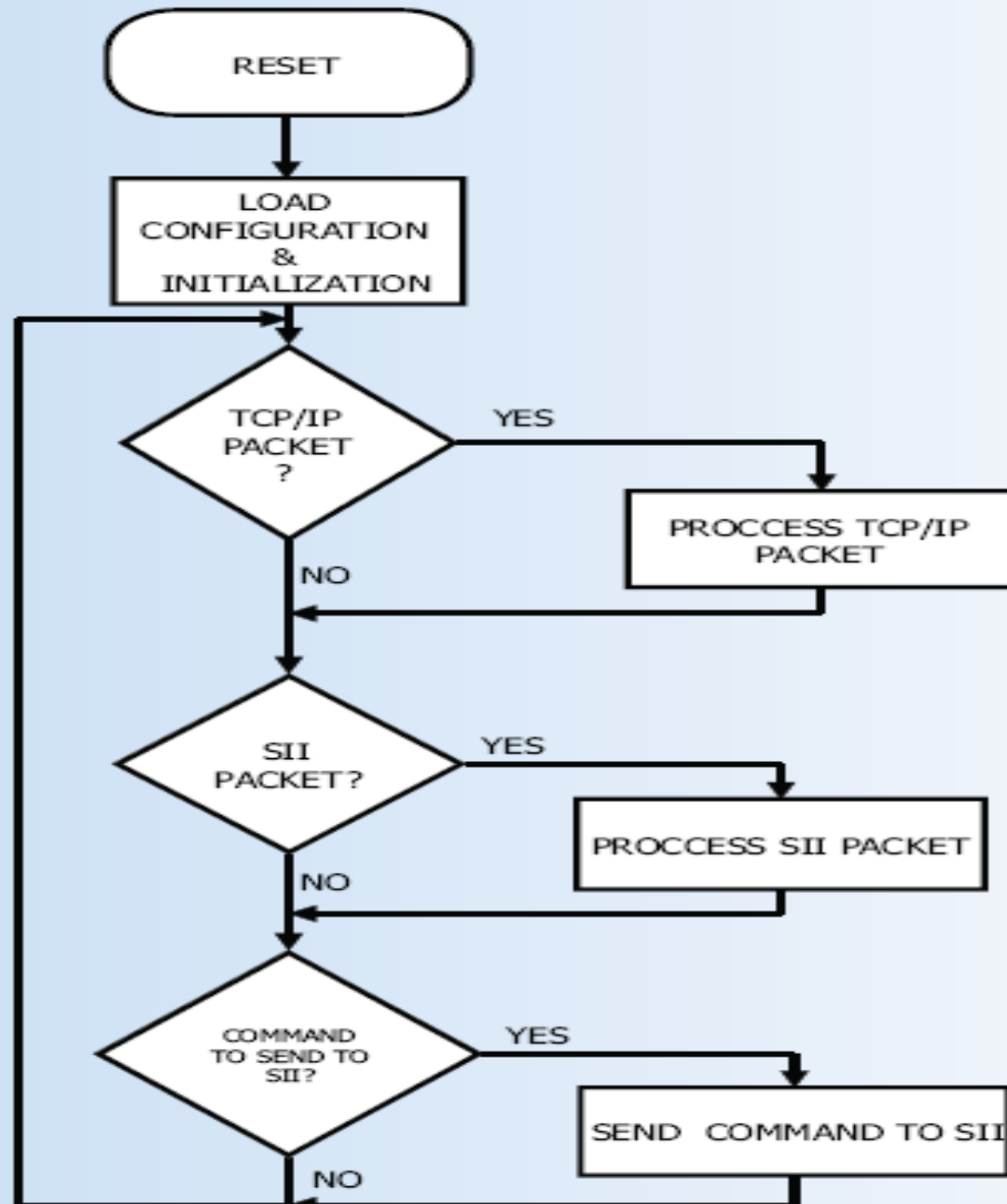


Base Station (BS)



INDEX

- Motivation
- State of the art
- Systems features
- Operating principle
- Sensor tag
- **Base Station**
- Applications
- Results and Conclusions.



➤ Related developments:

@ RFID smart temperature sensor: Application in monitoring and traceability of hemoderivates

INDEX

- Motivation
- State of the art
- Systems features
- Operating principle
- Sensor tag
- Base Station
- **Applications**
- Results and Conclusions.



INDEX

- Motivation
- State of the art
- Systems features
- Operating principle
- Sensor tag
- Base Station
- **Applications**
- Results and Conclusions.

➤ Application on European Project:

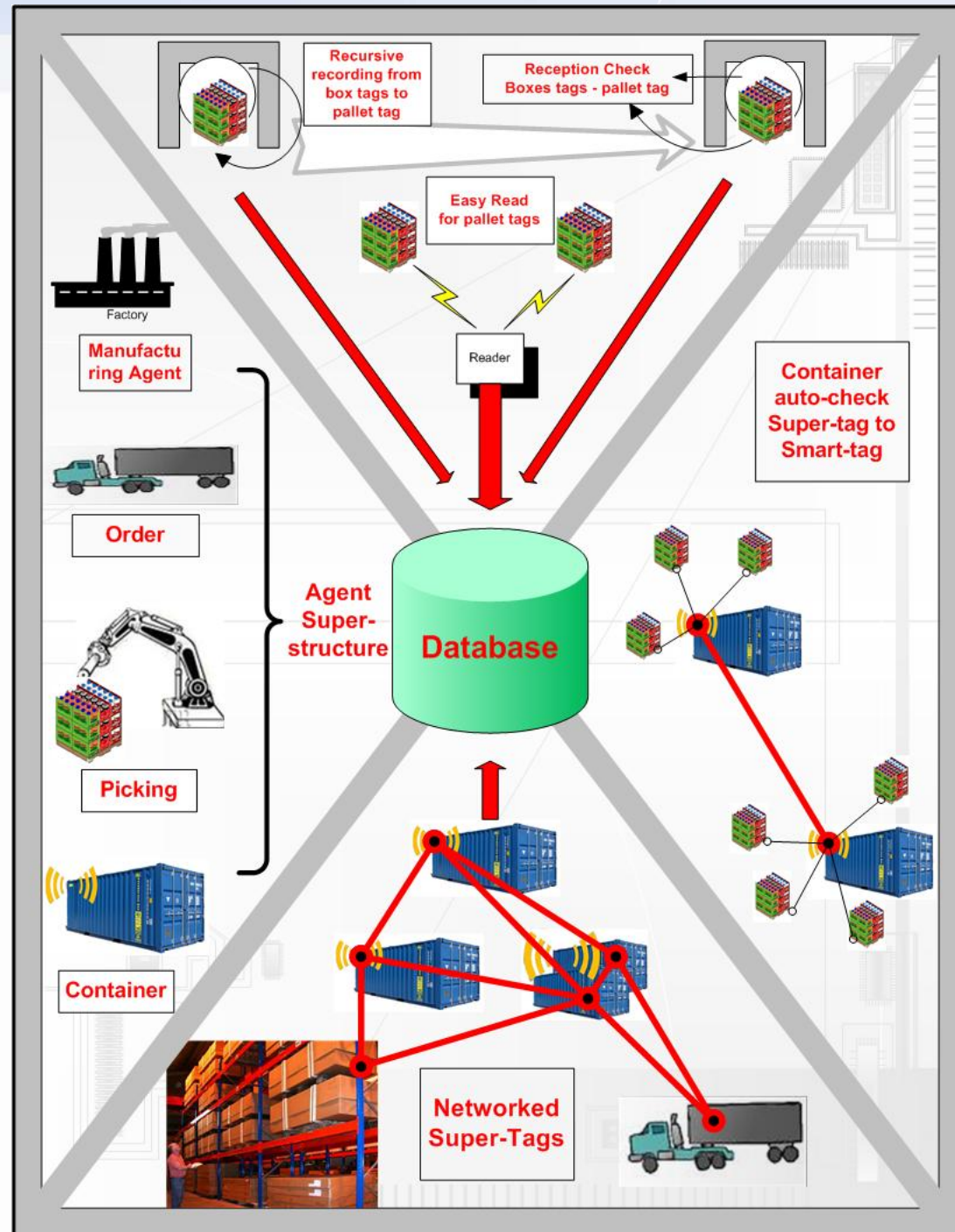
@ FP7-ICT-2007-1



NORMS

INDEX

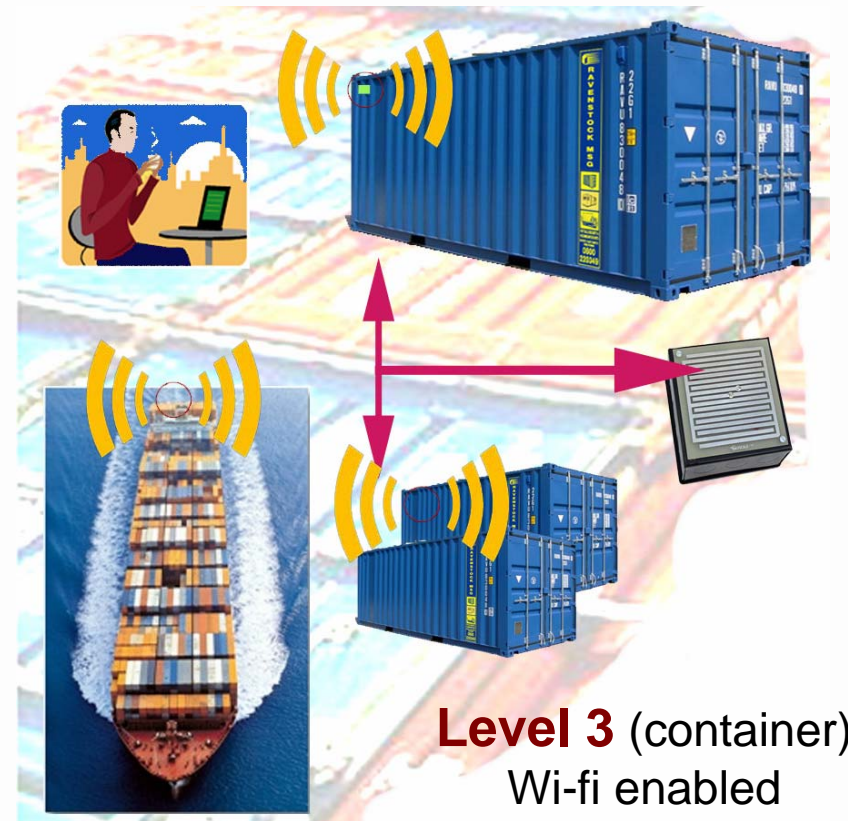
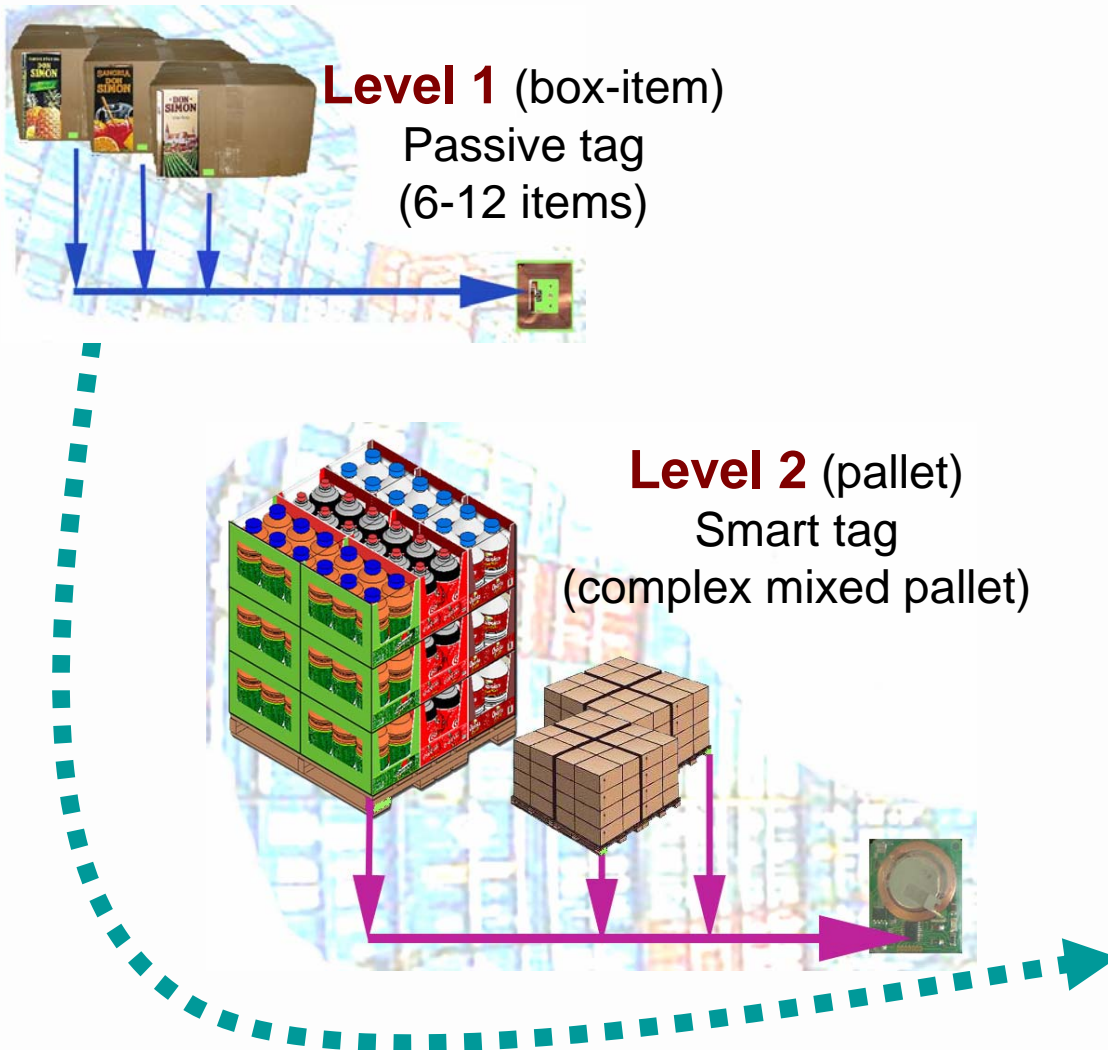
- Motivation
- State of the art
- Systems features
- Operating principle
- Sensor tag
- Base Station
- **Applications**
- Results and Conclusions.



Application: NORNS



RFID tracking systems for non-homogeneous loads



INDEX

- Motivation
- State of the art
- Systems features
- Operating principle
- Sensor tag
- Base Station
- Applications
- **Results and Conclusions**

- **Low energy consumption**
- **Operating range of 5 or 6 meters**
- **Economically viable to introduce for every company**
- **Data retaining of several years**
- **Possible remote control**
- **RFID capabilities: EPC's and extra memory (EPCIS).**



AUTOLOG

Group for the Automation of Products Identification and
Tracking in Manufacturing and Logistics

Thank you

AutoLog.uclm.es